





COMBINED RADIO EXERCISE

DEVELOPMENT
PHASE 1

7-21-22

Vision and Purpose

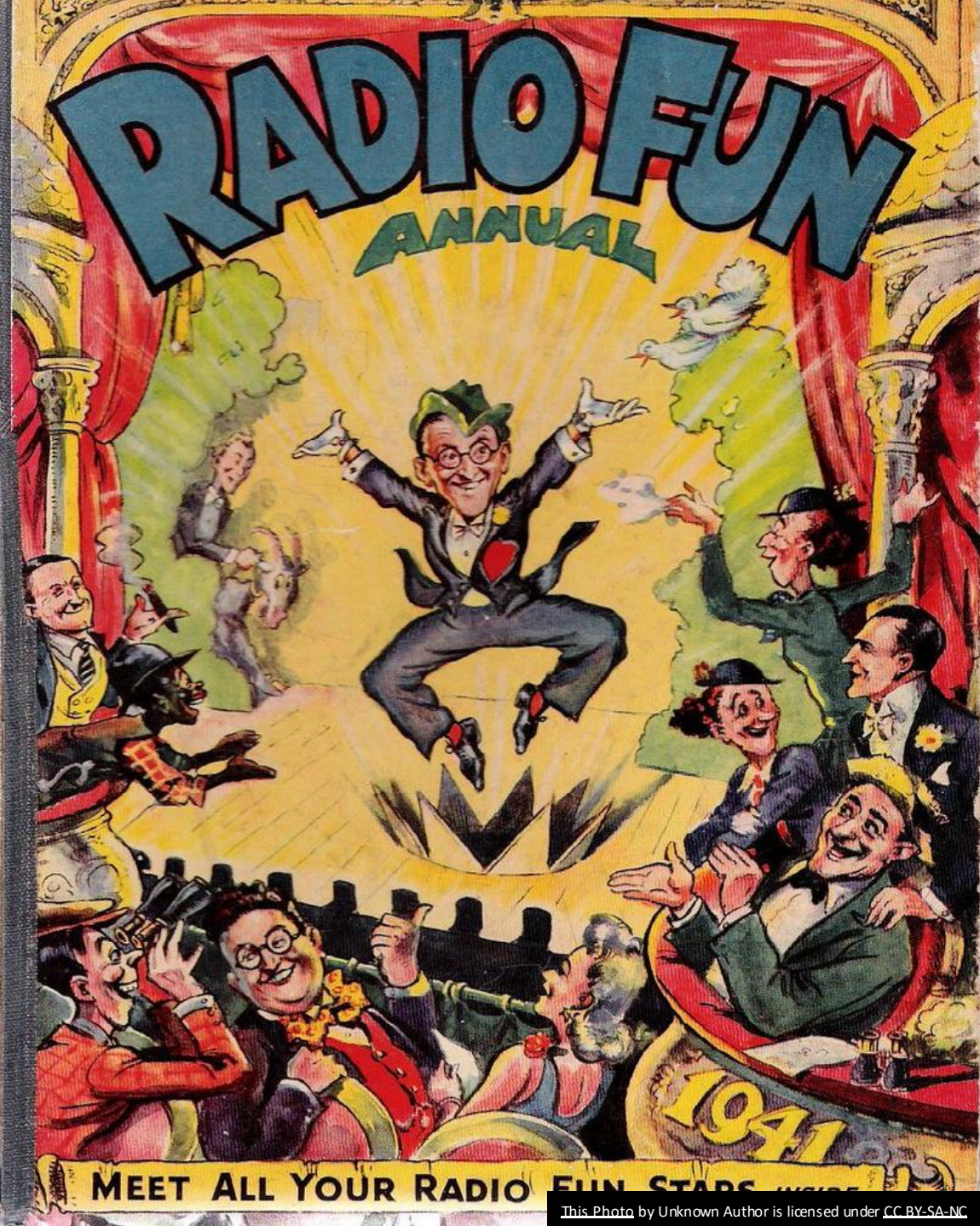
PLAY MORE RADIO IN THE OUTDOORS

INCLUDE QTH OPERATORS

NOT EVERYONE WANTS TO CLIMB OVER LOGS AND SWAT MOSQUITOS!!

FIELD OPERATORS TALK TO, AND WITH HOME OPERATORS

ALLOW SOME TO GET OUTSIDE ON THE RADIO BUT NOT HAVE TO BE ON FOOT PATROL. ie: Table and Shade operation



HAVE FUN & GROW

INVOLVE

- DRAW IN MORE OPERATORS

ATTRACT

- BRING AND RETAIN YOUNGER FOLKS OUT AND INTO THE HOBBY

BUILD ON

- BUILD ON ALLREADY GREAT LICENSING AND SENSATIONAL LOANER PROGRAM

HOW DO WE DO IT ?

- HOW DO YOU GET MORE PEOPLE IN THE HOBBY AND KEEP IT FUN AND INCLUDE AS MANY PEOPLE WHO WANT TO PARTICIPATE???





EARN POINTS!!

WIN BRAGGING RIGHTS!

- EARN POINTS THROUGH CHALLENGES
- CHALLENGES ARE ASSIGNED THROUGH RADIO COMMUNICATIONS
- REPORTING THROUGH RADIO COMMUNICATIONS
- RECORD KEEPING



COMING

FALL OF
2022



INAUGURAL COMBINED
RADIO EXCERSISE

- ALL NEW
- UNIQUE
- OUR RULES

3 STATION ELEMENTS

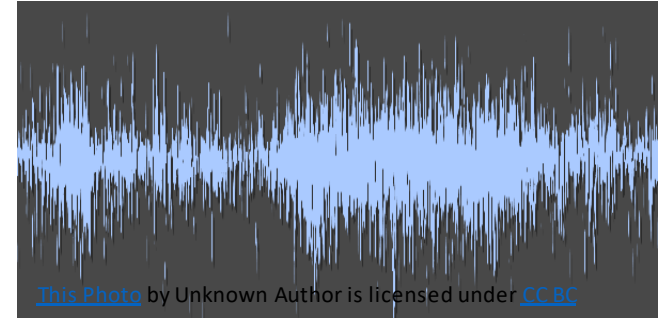
- 1. OVERWATCH** - THIS OPERATING STATION IS LIKE A “COMMAND CENTER”
- 2. RELAY OPERATOR** – A STATION WHO OPERATES FROM HOME QTH. 1 DEDICATED PER FIELD TEAM **COMMUNICATION BRIDGE** FROM OVERWATCH TO RADIO PATHFINDER PERSONELL
- 3. PATHFINDER** -RADIO OPERATORS WHO ARE **OUT IN FIELD OPERATING TRAVERSING TERRAIN**

UNBREAKABLE RULES

- OVERWATCH NEVER COMMUNICATES WITH PATHFINDER DURING EXERCISE
-
- ALL COMMS GO THROUGH RELAY OPERATOR TO MAKE IT FUN
 - ONLY EXCEPTION TO RULE 1 IS DEBRIEFING NET AT END OF EXERCISE



FREQUENCIES



HF/50MHZ

- IDEALLY USED IN THE FIELD ON WAYPOINT POI'S, GEOCACHE & WILDLIFE MISSIONS
- GAINS HIGHER POINTS THAN REPEATER VHF/UHF WORK
- NVIS

VHF/UHF/ OTHER

- SIMPLEX IS BEST POINT MAKER
- 3RD PARTY RELAY IS LESS POINTS
- REPEATER IS LEAST POINTS
- GOOD BACK UP IF HF DOESN'T WORK

FREQUENCY PLANS

- WE WILL PLAN A PRIMARY BAND AND FREQUENCY +/-
- HAVE A CONTINGENT BAND AND FREQUENCY +/-
- REPEATER'S ARE LAST OPTION



- WE CAN DESIGNATE A WINDOW OF TIME BEFORE GIVING UP AND MOVING TO CONTINGENCY BAND AND FREQUENCY
- WE CAN WORK ON THIS MORE AS WE DEVELOP THE EXERCISE

OVERWATCH



OVERWATCH

- GAME KEEPERS
 - STAT TRACKERS
 - CO-ORDINATORS
-



This Photo by Unknown Author is licensed under [CC BY-NC-ND](#)



OVERWATCH



- **OVERWATCH**
- ASSIGNS TARGET WAYPOINT POI'S & GEOCACHE CO-ORDINATES
- PLOTS LOCATIONS, WAYPOINTS AND DISTANCES TRAVERSED BY PATHFINDERS
- TALLY POINTS ACCUMILATED
- RECEIVE AND TRANSMIT RADIOGRAMS

DEBRIEFING NET

- CONCLUSION OF COMBINED RADIO EXERCISE
 - OVERWATCH HOST A SHORT NET WITH STATUS AND POINTS REPORTS FROM FIELD TEAMS AND THEIR RELAY OPERATOR.
 - NET CONCLUDES THE EXCERCISE
-



RELAY OPERATORS



RELAY OPERATORS

- RECEIVES AND PASSES ALL UPDATES, LOCATION AND STATUS TRAFFIC FROM PATHFINDER TEAM
 - PASSES WAYPOINT POI'S & GEOCACHE COORDINATES TRAFFIC TO BOTH OVERWATCH AND PATHFINDERS
 - RECEIVES AND PASSES WILDLIFE ENCOUNTERS AND PHOTOGRAPH COUNTS TO OVERWATCH.
 - MESSAGE HANDLING
-



RELAY OPERATOR POINTS IDEAS

- EACH PATHFINDER CONTACT ON HF/VHF
 - 50 POINTS?
 - EACH GPS/GEOCACHE CONFIRMATION COORDINATES TO AND FROM PATHFINDER TEAM
 - 50 POINTS?
 - SUCCESSFULL RE-TRANSMIT OF GPS WAYPOINTS/ GEOCACHE DATA/ HEALTH CHECKS AND STATUS REPORTS,ETC OF FIELD TEAMS TRAFFICKED TO OVERWATCH
-



PATHFINDERS



PATHFINDER

- SETUP A STATION AT A PREDETERMINED FIELD BASE
 - COMMUNICATES CHECK-INS WITH RELAY OPERATOR
 - GPS USE/ LOCATE POI'S AND DEPLOY GEOCACHES
 - ATTEMPT HF/50MHZ STATION CHECK-IN AT WAYPOINTS?
 - RECORDS WILDLIFE ENCOUNTERS
-



PATHFINDER POINTS IDEAS

- DEPLOY AND FIND GEOCACHES TO EARN POINTS
 - RECORD WILDLIFE ENCOUNTERS TO EARN POINTS
 - MOVE TO POI'S TO EARN MORE POINTS
 - EXAMPLES OF WILDLIFE THAT COUNT ARE
-



PATHFINDER POINTS

- DEER, WILD HOGS, SQUIRRELS, RABBITS, RACCOONS, FOXES, COYOTES, ETC
 - SASQUATCH?
 - EAGLES, OWLS, RED-HEADED WOODPECKERS, HAWKS
 - **EAGLES** EARN HIGHEST POINTS!!
-



EXERCISE DAY

**RECORD NATURE ENCOUNTERS IN A
FIELD LOG/JOURNAL**

**EARN POINTS WHILE
TRAVERSING TERRAIN BY
DISTANCE**

**REPORT ENCOUNTERS
THROUGH RELAY
OPERATOR**

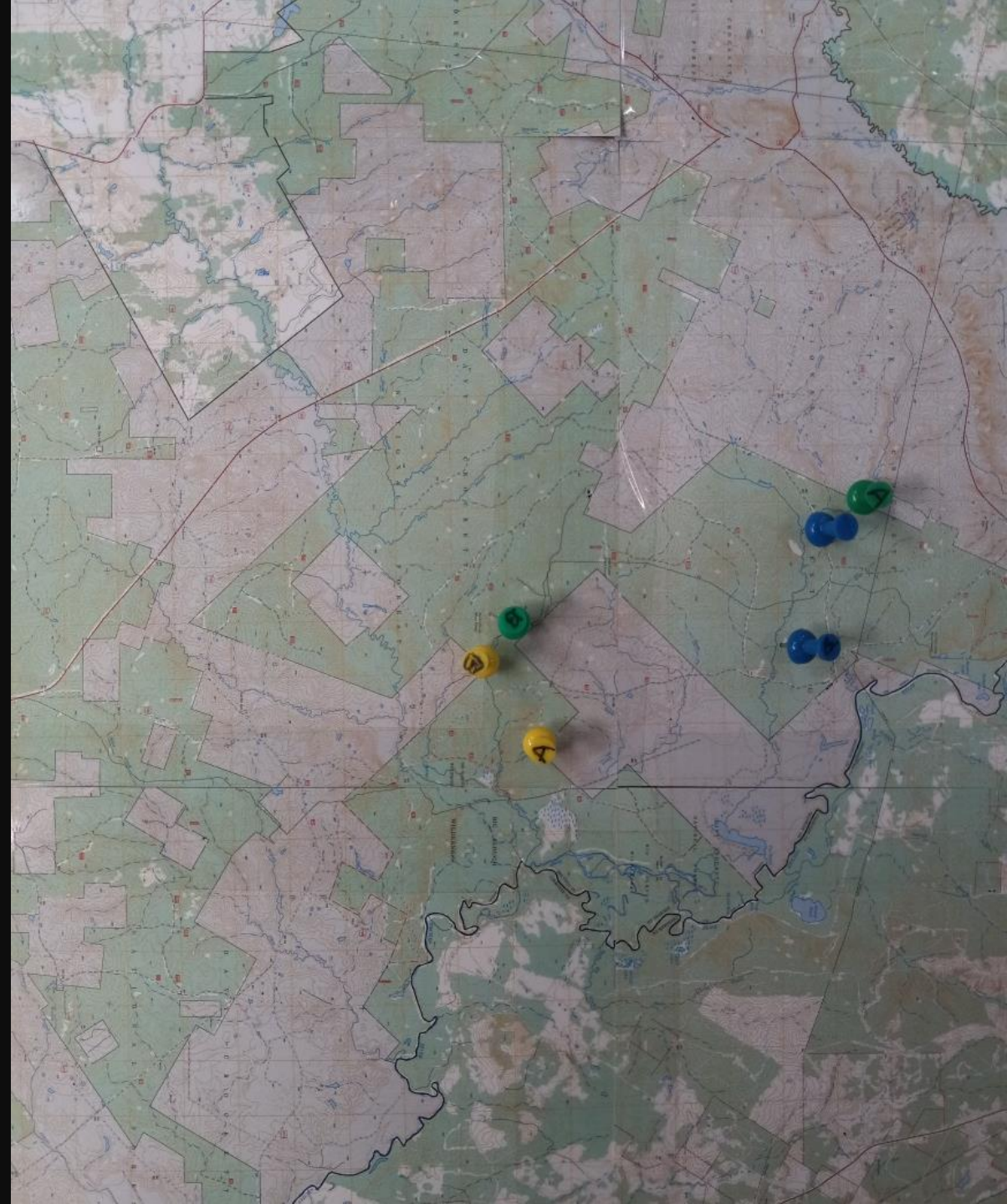
PATHFINDERS

**TAKE NATURE PICTURES DURING
EXCERCISE**

- WILDLIFE PICTURES ARE WORTH
MORE POINTS THAN JUST A
PAPER LOG

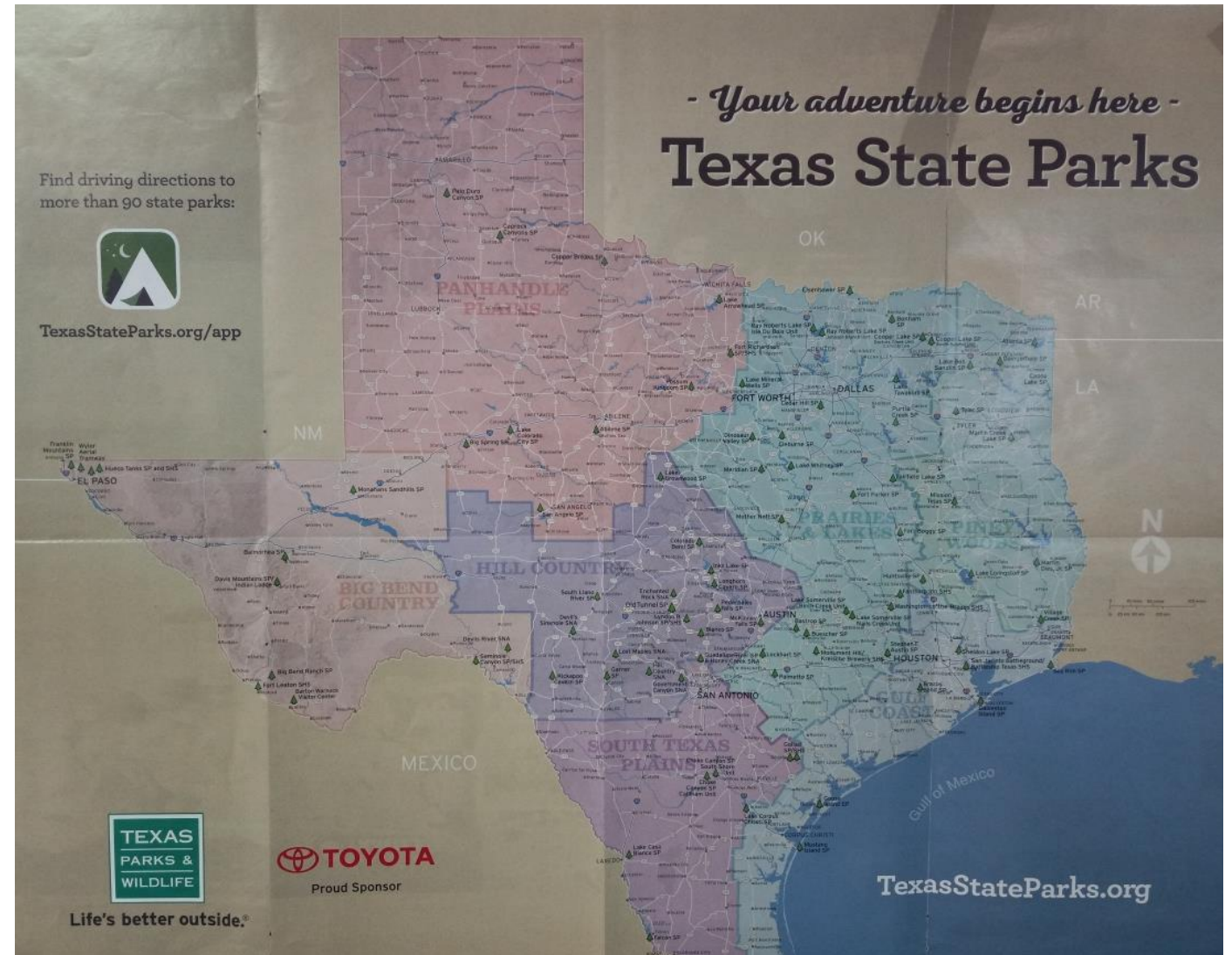
AREA OF OPERATION

- WIDE VARIETY
 - CO-ORDINATED TOGETHER
 - YET APART
 - FOR A UNIQUE EXPERIENCE
 - TEAMS AT MULTIPLE AREAS POSSIBLE
-



PLACES TO GO

- TEXAS PARKS
- WILDLIFE PRESERVES
- NATIONAL FOREST AND GRASSLANDS
- TEXAS FOREST
- RECREATION AREAS
- LIMITED USE PERMITS IN PUBLIC HUNTING AREAS



Derby Entrance

SE Loop 564

Hub Entrance

Appaloosa Entrance

2724



MINEOLA NATURE PRESERVE

ON THE SABINE RIVER



Campsite A Area
People's Pavilion

THE DERBY

Campsite B Area
THE HUB

Morgan's Trail

Pinto Loop

Apache Canyon

GRANDPA'S POND

BRIDGE BOB POND

KAYLA'S POND

BAILEY'S POND

Main/"Goodwin" Gate

WYATT'S POND

GRISHAM'S BRIDGE

Artesian Well (Dry)

PULLEN BRIDGE

PULLEN POND

BEAVER POND

Beaver Pond Tr.

Chestnut Trail

Zeppo Well Trail

LONDON BRIDGE

Greer Hill Entrance

Campsite C Area

2724

DUNCAN POND

PEACOCK POND

PARK TRAILS

- EQUINE/WALK/BIKE
- MOUNTAIN BIKE
- WALK/HIKE
- PADDLING

CAUTION:

River and low lying areas subject to flash flooding and rising waters.

9

DOUBLE BRIDGES

Buster's Route

WOOD BRIDGE

DR. JOHN THOMAS BRIDGE

West Walking Loop

Aligator Loop 2

Mustang Trail

Filly Trail

Aligator Loop 1

Navajo Trail

Boadwin Trail

Duncan Trail

Sendera Trail

Wildlife Viewing Stand

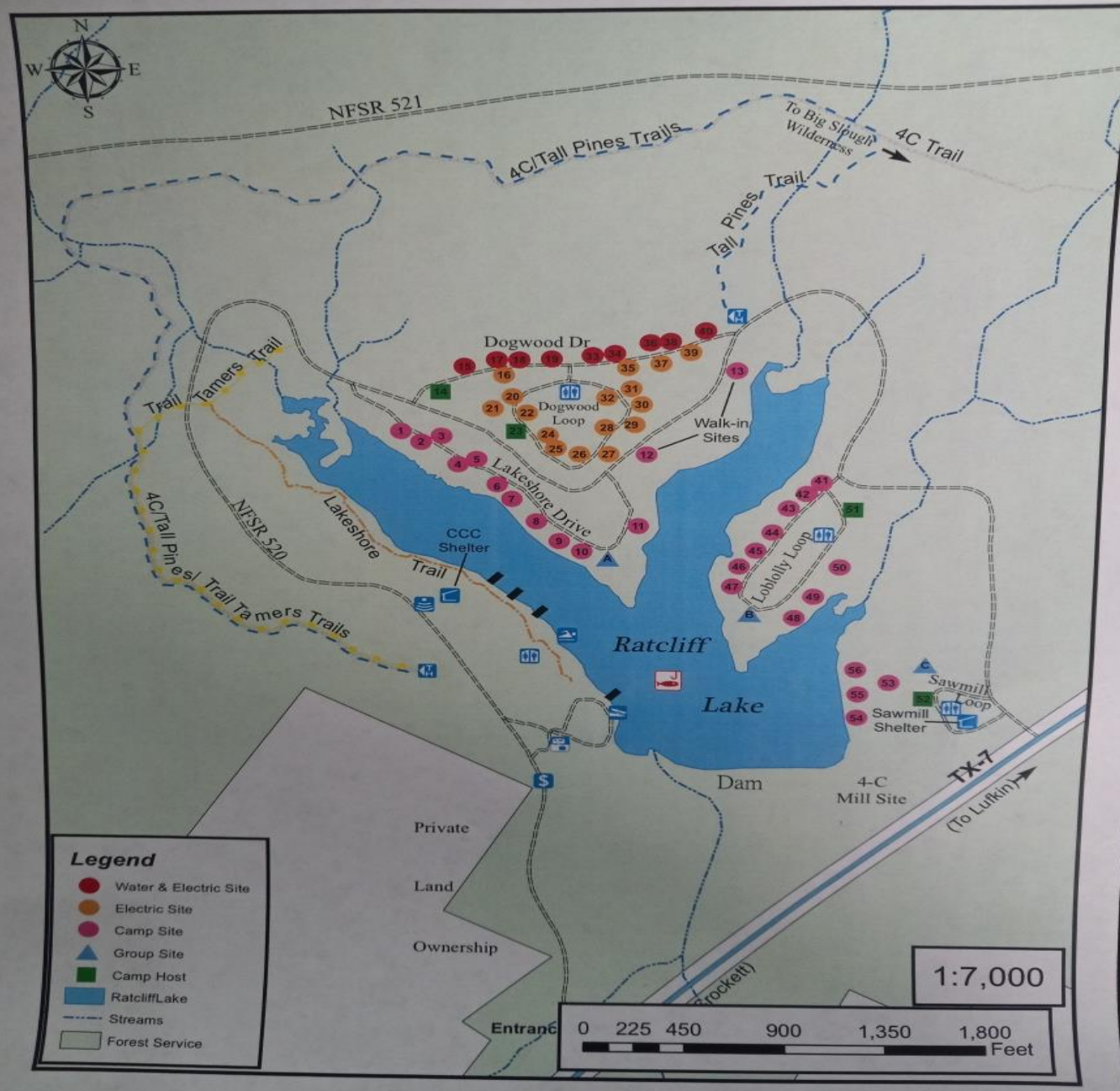
Wildlife Viewing Stand

Wildlife Viewing Stand

Wildlife Viewing Stand

Wildlife Viewing Stand





GEAR UP



HANDHELD GPS



This Photo by Unknown Author is licensed under [CC BY-SA](#)



This Photo by Unknown Author is licensed under [CC BY-SA-NC](#)

HF RADIO IN A BAG



- HARRIS FALCON 2 RADIO PACK

- N5EAB HAS ONE IF YOU WANT TO LOOK AT IT

PORTABLE ANTENNA SYSTEM

- THE LIGHTER THE BETTER
- NEEDS TO BE SUPER PORTABLE
- BE CREATIVE



This Photo by Unknown Author is licensed under [CC BY-SA-NC](#)



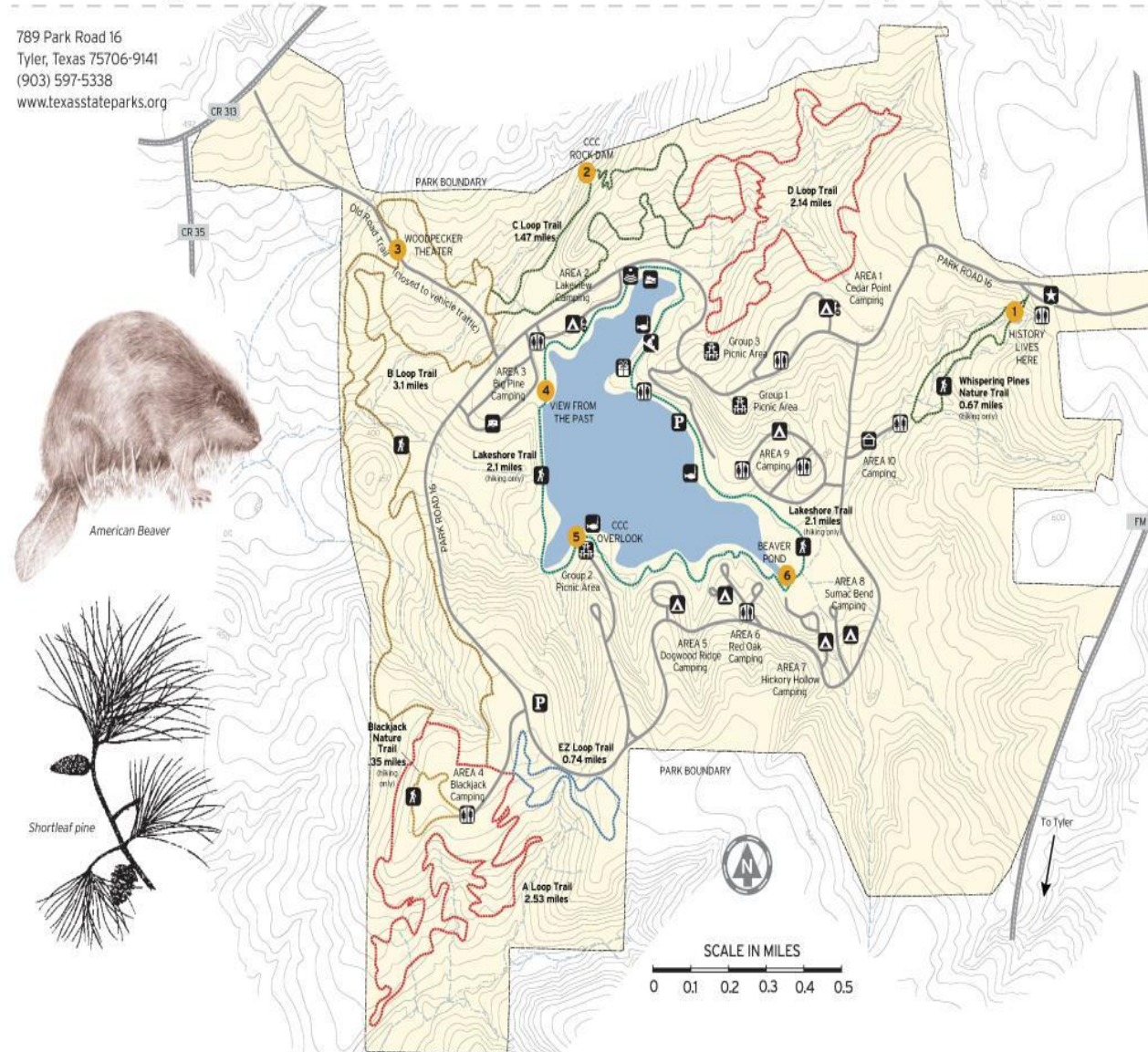
This Photo by Unknown Author is licensed under [CC BY-SA-NC](#)

MAPS



Tyler State Park Trails Map

789 Park Road 16
Tyler, Texas 75706-9141
(903) 597-5338
www.texasstateparks.org



LEGEND

- Restrooms
- Parking
- Headquarters
- Hiking only trail
- Interpretive trail
- Fishing
- Boat Ramp
- Group picnic areas
- Group Dining Hall
- Tent Camping
- Water/Electric Sites
- Full Hook-ups
- Trailing Camping/Sites
- Amphitheater
- Playground

All trails allow hiking and biking unless otherwise indicated.
Contour intervals are 10 feet.

No claims are made to the accuracy of the data or to the suitability of the data to a particular use.

POINTS OF INTEREST

(GPS coordinates shown in decimal degree, WGS84)

- HISTORY LIVES HERE** 32° 28.910'N 95° 17.056'W
Look for the children's wading pool, rock waterfall, and Beauchamp Springs in this area, developed by the Civilian Conservation Corps (CCC).
- CCC ROCK DAM** 32° 29.083'N 95° 17.879'W
The off-property dam visible from Trail C is an example of CCC-designed park structures that incorporated natural materials to blend with the surrounding landscape.
- WOODPECKER THEATER** 32° 28.964'N 95° 18.236'W
This open pine forest is prime habitat for seven woodpecker species seen in the park.
- VIEW FROM THE PAST** 32° 28.771'N 95° 17.938'W
The CCC architectural plans include many scenic views where the historic buildings blend into the landscape.
- CCC OVERLOOK** 32° 28.588'N 95° 17.875'W
At the top of the hill to the East, take in the view enjoyed by visitors since the 1930s.
- BEAVER POND** 32° 28.540'N 95° 17.478'W
Beaver ponds and associated high water levels create habitat diversity and attract many types of wildlife.

TEAMWORK AND RADIO FUN

- THIS COMBINED RADIO EXCERSICE WILL
- HELP US GET ON THE AIR
- GET OUTSIDE
- GET INVOLVED
- PRACTICE USING OUR SKILLS AND EQUIPMENT
- WORK TOGETHER





RE-CAP

SUMMARY

NAVIGATION

GEOCACHING

WILDLIFE ENCOUNTERS

MESSAGE HANDLING

- CHALLENGES
- OVERWATCH CAN ASSIGN WAYPOINT POI'S AND GEOCACH GPS CO-ORDINATES
- RELAY OPERATOR SENDS INFORMATION TO AND FROM OVERWATCH TO PATHFINDERS
- PATHFINDERS PERFORM THE FIELD WORK. WALK, CLIMB, RIDE BIKE, TRAVEL BY LAND SEA AND AIR WE DON'T CARE!! MOTORIZED WHEELED VEHICLES LOSE POINTS THOUGH SO PLAN ACCORDINGLY
- UNIQUE RADIOGRAM HANDLING?

EXERCISE DAY

PATHFINDERS

SETUP A FIELD BASE STATION

- THIS COULD BE A CAMPSITE
- SOMEWHERE YOU KEEP YOUR STUFF.
- CAR IN A PARKING LOT
- BARGE IN A LAKE
- RALLY POINT

RELAY OPERATORS GET ON FREQUENCY

- WILL MAKE CONTACT WITH PATHFINDERS AT FIELD BASE
- WILL TRAFFIC INFO/ LOCATION TO OVERWATCH
- WILL RELAY ALL GEOCACHE/POI COORDINATES TO PATHFINDERS FROM OVERWATCH

EXERCISE DAY

PATHFINDERS

MOVE TO DEPLOY GEOCACHES

- RADIO RELATED
- QSL CARD ?
- ie: THIS SPOT, 8:10 UTC , ON SSB...37 MILES AWAY....I TALKED VIA RADIO TO.....

GO FIND GEOCACHES/WILDLIFE

- OVERWATCH RELAYS GPS COORDINATES TO PATHFINDER TEAM VIA RELAY OPERATOR
- RECORD WILDLIFE ENCOUNTERS



EXERCISE DAY

BE THERE FOR PATHFINDER TEAM

- BEING ON TARGET
- ON FREQUENCY
- ON TIME
- ACCURATE
- PASS TRAFFIC BOTH TO AND FROM OVERWATCH AND PATHFINDERS

RELAY OPERATORS

LIKE OLD FAITHFUL



[This Photo](#) by Unknown Author is licensed under [CC BY-NC](#)

EXERCISE DAY OVERWATCH

- SET UP AND SET IN
- PLOTS AND SENDS GEOCACHE DEPLOYMENT CO-ORDINATES TO RELAY OPERATOR TO PASS ALONG TO PATHFINDER TEAM
- **DOES NOT** COMMUNICATE WITH PATHFINDERS EXCEPT ON NET AT ENDING OF EXERCISE
- CHARTS MOVEMENT POINTS AND WILDLIFE POINTS
- RECORDS SIMPLEX OR REPEATER POINTS
- HOST A DEBRIEFING NET WITH RESULTS AT CONCLUSION



THIS IS AN IDEA AND STILL A ROUGH PLAN

- WE CAN MAKE CHANGES USING YOUR IDEAS
- THE MORE WE PUT INTO THIS THE MORE WE CAN GET OUT OF IT
- DON'T BE AFRAID TO SAY SOMETHING OR SPEAK UP ON A COOL IDEA
- THIS IS OUR CLUB AND WE CAN MAKE THIS A FUN TIME IN THE RADIO HOBBY FOR OUR GROUP OR OTHERS TOO



COMBINED RADIO EXERCISE

FALL 2022

BY KI5OFN & K5TYR

